

## **High stress able strips, equip with clamping pressure plates**

These strips correspond to the implementations in the outer form according sheet 03, works according the same principle however as the METRON – clamping elements according sheet K 05.

On side 2, a lower grip is represented, that shows a Ms-pressure disc with on-vulcanised sealing, through which slip pressure hose, hose end fitting, clamping mushroom, Teflon strip, clamping clutch and claming screws.

Alternatively, these clamping strips decree over 1 or 2 Ms –pressure disc, sees implementation A and B.

Number, size and situation of the through holes are to be declared in the order.

### Ausführung A

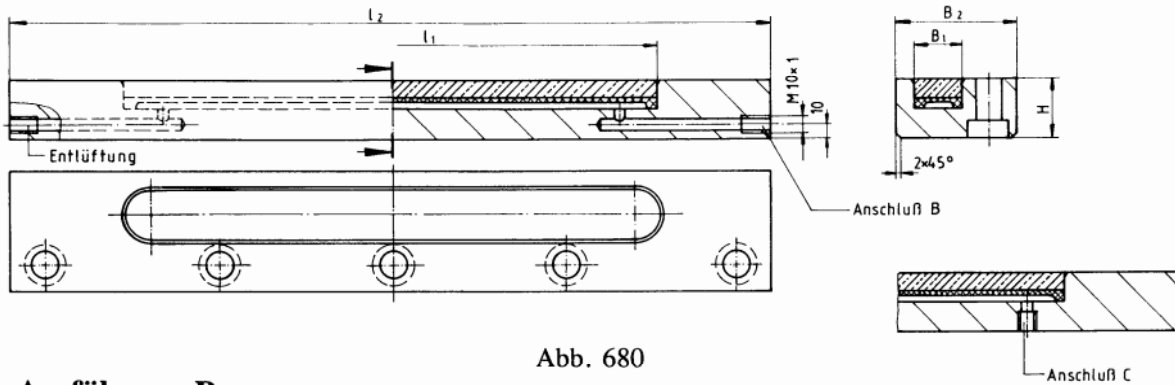


Abb. 680

### Ausführung B

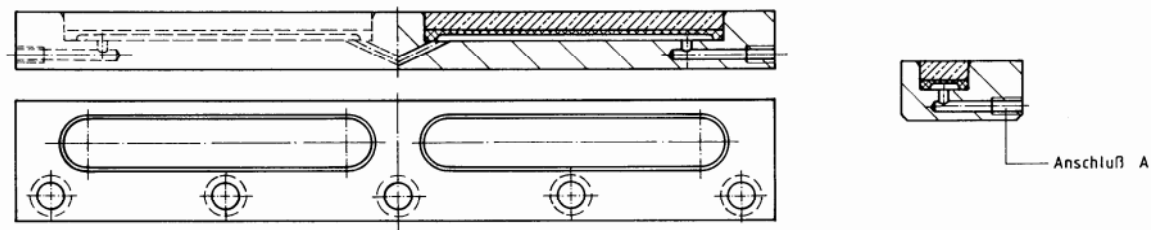


Abb. 681

**Maximum pressure 250 bar**

Standard measurements of the clamping pressure discs in mm

Width 0/-0,02	Length L 0/-0,02							Height H
15	130	250	261					12
20	88	195	208	230	270	300		12
25	100	210	220	300	340	360	410	12
30	208							12

B2 = variable  
L2 = variable

$$F = B1, L1, PS, 0,95$$

F = clamping force in daN  
p = hydraulic oil pressure in bar  
B1 = width of the pressure plate in cm  
L1 = length of the pressure plate in cm